

Before You Start

! This SAFETY ALERT symbol identifies important safety messages. Carefully read each safety message that follows. Failure to understand and obey a safety message, or recognize a safety hazard, could result in injury or death to you or others around you.

Symbol	Meaning
! DANGER	Indicates an imminently hazardous situation which, if not avoided, will result in death or serious injury.
! WARNING	Indicates a potentially hazardous situation which, if not avoided, could result in death or serious injury, including hazards that are exposed when guards are removed.
! CAUTION	Indicates a potentially hazardous situation which, if not avoided, may result in minor or moderate injury. It may also be used to alert against unsafe practices.
NOTE	This is important information for proper use of this equipment. Failure to comply may lead to premature equipment failure.

Before beginning installation, please thoroughly read these instructions and the Operator's Manual for your attachment. If there is anything you do not understand, immediately contact your dealer, or call our factory direct at (573) 642-2246.

General Information

These assembly and installation instructions apply to **PN 200290 T3 Driver Wear Plate Kit** for T3 Drivers in the serial number range **3210 to 9618**.

Installation Instructions

Starting with STEP 5, parts have reference callouts in parentheses, e.g. "bolts (J)." Alphabetic reference callouts refer to existing parts in your T3, depicted in *Fig. 1*. Numerical reference callouts refer to the new parts in the kit, depicted in the *Parts* section on Pg 4.

Recommended Tools

- Torque wrench
- 9/16" wrench (2)
- Ratchet
- 9/16" socket
- 3/8" Allen socket bit
- MIG, TIG, or arc welder
- Straight edge
- Cleaning rag
- Angle grinder with flap disc
- Die grinder or rotary tool
- Grease gun

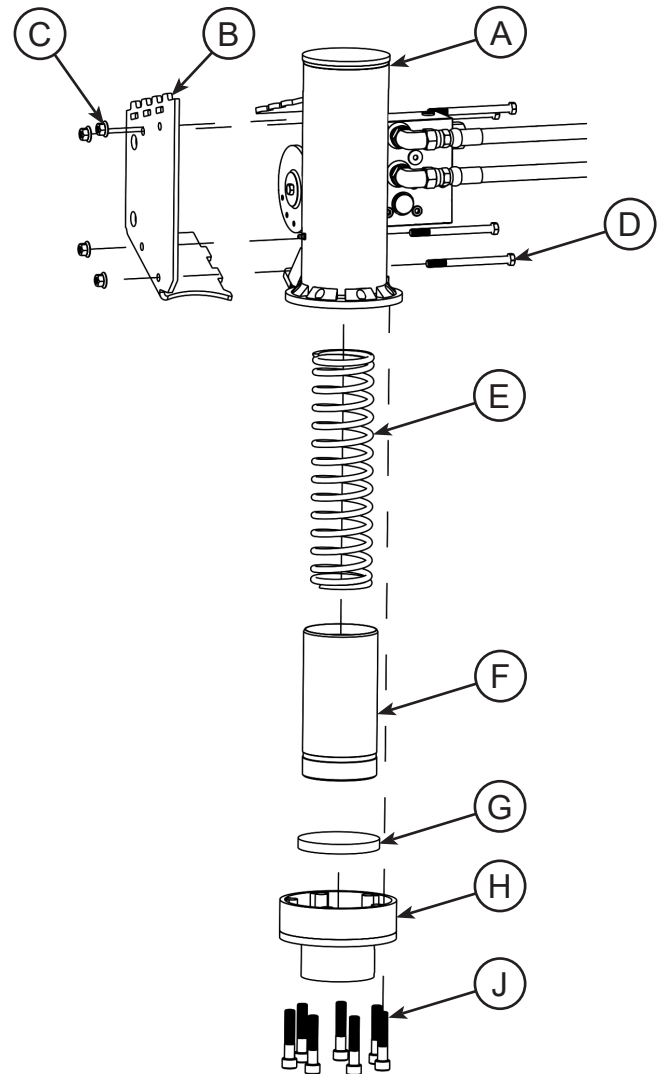


Fig. 1

STEP 1: Slowly lower the T3 onto a flat, level surface, or use blocking to securely support the T3.

! WARNING

Never work under equipment supported by hydraulics. Even with the vehicle shut off, equipment can suddenly drop if controls are actuated or if hydraulic lines burst.

STEP 2: Shut off the vehicle. Engage the parking brake, or securely chock vehicle to prevent movement.

! WARNING

Always shut off the vehicle engine, remove the key, lower vehicle arms, and relieve all hydraulic pressure before dismounting the vehicle. Never leave equipment unattended with the vehicle running.

T3 Driver Wear Plate Kit Installation Instructions

STEP 3: Disconnect the hydraulic hoses from the vehicle's auxiliary hydraulics.

⚠ WARNING

Before connecting or disconnecting hydraulic lines or fittings, be sure to relieve all pressure by cycling all hydraulic controls after shutdown. Remember hydraulic systems are under pressure whenever the engine is running and may hold pressure after shutdown.

STEP 4: Remove the T3 from its mount by removing the four ruc clips and two 3/4" pins.

STEP 5: Using two 9/16" wrenches, remove the four bolts (D) and nuts (C) holding the housing cover plate (B) in place, and remove the cover plate. Inspect the weight assembly (F) to ensure it moves freely and is not bound or jammed. A bound or jammed weight assembly may hold the spring (E) under tension, causing a risk of injury when the foot (H) is removed from the housing (A).

⚠ WARNING

Before servicing or adjusting attachment, relieve all stored energy.

STEP 6: Using a ratchet with 3/8" Allen socket bit, remove the seven bolts (J) holding the foot (H) onto the housing (A).

STEP 7: With the foot (H) removed, remove the strike plate (G), weight assembly (F), and spring (E) from the housing (A). Inspect the housing for wear as in *Fig. 2*.

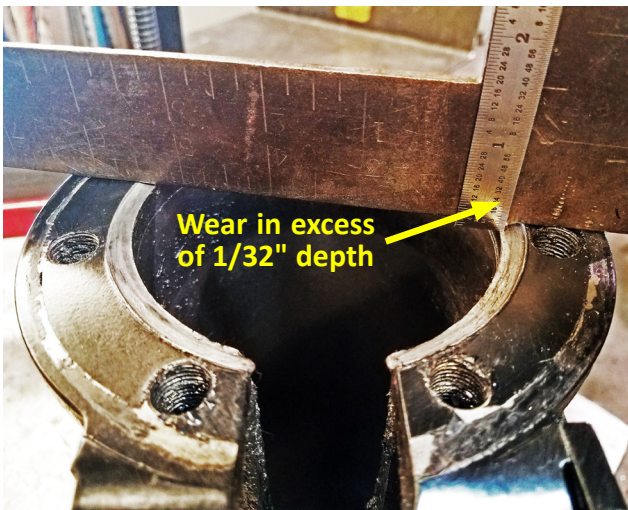


Fig. 2: Worn housing bottom flange

STEP 8: The housing (A) wear pictured in *Fig. 2* is in excess of 1/32". If the wear on your T3 Driver housing is less than this amount, skip to STEP 15. If the wear on your T3 Driver housing is equal to or greater than 1/32", continue to STEP 9.

NOTE

A worn housing must be repaired as outlined in STEPS 9 through 14, or the wear plate (1) may malfunction and cause damage to the T3 Driver.

STEP 9: Using a cleaning rag and an appropriate solvent, remove grease from inside of housing (A), inside cover plate (B) area, and inside housing bottom flange.

STEP 10: Apply a series of small spot welds around the worn inside circumference of the housing (A) bottom flange to build it up as in *Fig. 3*.



Fig. 3: Spot welds around flange circumference

STEP 11: Using an angle grinder and flap disc, grind the spot welds to recreate a smooth, flat surface comparable to the original housing (A) bottom flange profile as in *Fig. 4*.

T3 Driver Wear Plate Kit Installation Instructions



Fig. 4: Flange restored to its original surface profile

STEP 12: If low spots remain in the flange surface, apply additional spot welds, then grind to a smooth surface as in STEPS 10 and 11. Use a straight edge to check that the surface is smooth, even, and flat.

STEP 13: Using a die grinder or rotary tool, smooth the inner circumference of the housing (A) bottom flange as in Fig. 5.



Fig. 5: Flange restored to its original inner circumference profile

STEP 14: Using a cleaning rag and an appropriate solvent, clean inside the housing (A) to remove grease that may contain metal shavings from welding and grinding.

NOTE Ensure all metal shavings are removed prior to reassembly.

STEP 15: Insert the spring (E) into the weight assembly (F), then insert the weight assembly and spring into the housing (A).

STEP 16: With the housing (A) inverted, set the new wear plate (1) in position on the housing bottom flange. Ensure the large slot in the wear plate aligns with the gear rack on the weight assembly (F) as in Fig. 6.

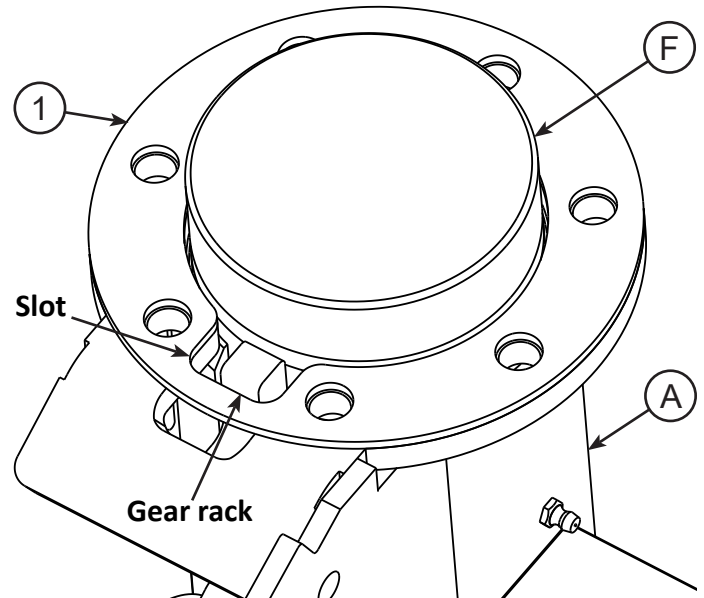


Fig. 6: Wear plate oriented correctly on housing flange

STEP 17: Insert the new strike plate (2) into the new foot (3). Apply Loctite 271 to the seven foot bolts (J). Using a torque wrench with 3/8" Allen socket bit, install the wear plate (1), strike plate (2), and foot (3) onto the housing (A) with the seven bolts. Torque to 120 ft.-lbs.

STEP 18: Using a torque wrench with 9/16" socket and a 9/16" wrench, reinstall the housing cover plate (B) using the four bolts (D) and nuts (C). Torque to 31 ft.-lbs.

STEP 19: Reinstall the T3 onto its mount using the two 3/4" pins and four ruc clips.

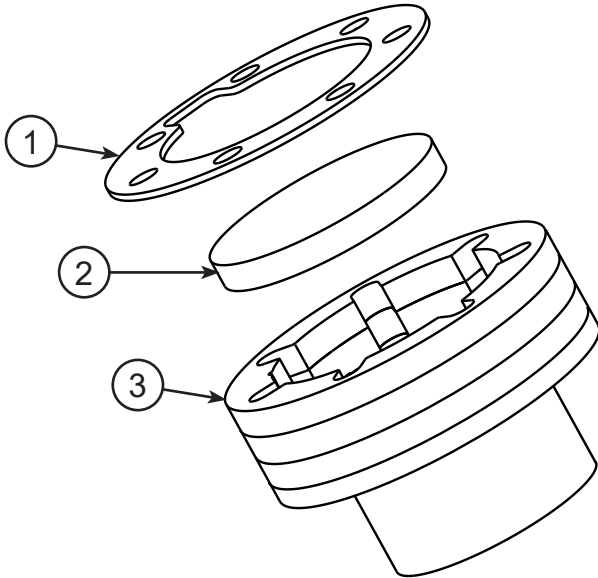
STEP 20: Grease the T3 liberally prior to use.

T3 Driver Wear Plate Kit Installation Instructions

Parts

WARNING

This product can expose you to chemicals known to the State of California to cause cancer and birth defects or other reproductive harm. For more information go to www.P65Warnings.ca.gov/product.



REF. NO.	PART NO.	DESCRIPTION	QTY.
1	190176	Wear Plate	1
2	21391	Strike Plate	1
3	200145S	Foot (Includes Decals & Safety Signs)	1